



# The Page Turner

Newsletter of the Terrebonne Parish Library System

Main | Chauvin | Dulac | Dularge | East Houma | Gibson | North

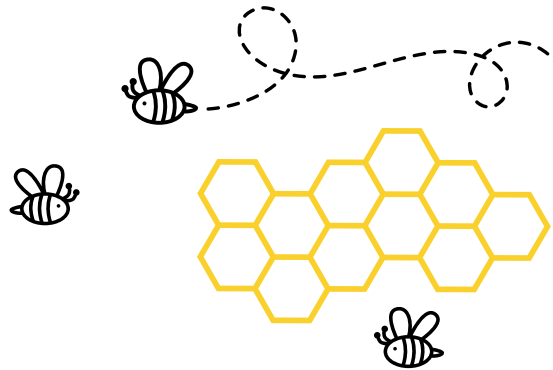
FRIENDS OF THE TERREBONNE PUBLIC LIBRARY

## Annual Spelling Bee

NOV. 4, 2023  
MAIN LIBRARY

\$1 // GRADE 1-6

\$2 // OPEN



The Annual Spelling Bee returns to the Main Library on November 4, 2023 with grade level competitions and an open competition for all ages on the following schedule:

- 9:00 a.m.: Registration opens
- 9:30 a.m.: 1st & 2nd grade competition
- 11:00 a.m.: 3rd & 4th grade competition
- 1:00 p.m.: 5th & 6th grade competition
- 2:00 p.m.: All ages open competition

The entry fee is \$1 for grades 1-6 and \$2 for open competition. Winners will receive prizes, and all participants will have the opportunity to compete in a supportive environment.

This program is a fundraiser for the Friends of the Terrebonne Public Library, who support the Terrebonne Parish Library's mission to encourage lifelong learning, literacy, and creativity. Find out more about the Friends of the Terrebonne Public Library by visiting [mytpl.org/friends](http://mytpl.org/friends)

For more information, please contact Jessica Mouton at [jmouton@mytpl.org](mailto:jmouton@mytpl.org)

## Science Projects with BayouSTEM

Join us and Bayou STEM for kids science-engaging projects at the following locations:

- North Branch: Nov. 4 | 1:30 p.m.
- Main Library: Nov. 9 | 4:30 p.m.
- Dulac Branch: Nov. 20 | 10 a.m.
- East Houma Branch: Nov. 25 | 10:30 a.m.

For more info. call 985-876-5861 ext. 233.



## STAY CONNECTED

Learn about the Affordable Connectivity Program, how to apply, and how to use its benefits in this FREE one-hour session.

Join us!

Main Library

Nov. 7 | 6 p.m. (presentado en español)

Nov. 9 | 6 p.m. (presented in English)

Two sessions will be offered. No registration required. This program is free to attend and open to the public.

For more information, call 985-876-5861, option 2 or email [rlecompte@mytpl.org](mailto:rlecompte@mytpl.org)

These workshops are made possible by the library system in partnership with the Public Library Association's Digital Literacy Incentive, which is supported by AT&T.



## In This Issue

Program Spotlight **page 2**

Library Programs **page 3 - 5**

Computer & Creative **page 6**  
Classes

# Program Spotlight



## Diabetes Awareness Month

Learn about the disease that affects more than 37 million Americans every year. The library is hosting educational programs this month related to diabetes prevention, detection, nutrition and wellness. These programs are presented by our partners below.



Whether you have diabetes, are pre-diabetic, or just want to take control of your health, this four-part class will provide the foundation you need to make the best choices for you and your family. Presented in partnership with LSU AgCenter.

Main Library  
Thursdays in November at 10 a.m.

- 11/9: *What is Diabetes?*
- 11/16: *Carbohydrates & Sweeteners*
- 11/30: *Fats & Sodium*
- 12/7: *Vitamins, Minerals & Fiber*



Please call 985-446-1316 or email [bgautreaux@agcenter.lsu.edu](mailto:bgautreaux@agcenter.lsu.edu) for more info. Hosted by Becky Gautreaux, RDN, LDN & Nutrition agent with the LSU AgCenter.

## National Diabetes Month Education Series

Learn about diabetes and health in this week-long series at the North Branch.

### *What is Diabetes?* with START Corporation

North Branch  
Nov. 27 | 7 p.m.

### *Nutrition for Diabetes* with Body by Thomas

North Branch  
Nov. 28 | 7 p.m.

### *Mental Health for Diabetics* with Empowerment Services

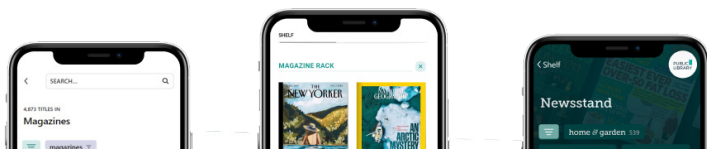
North Branch  
Nov. 29 | 7 p.m.

### *Diabetes in Children and Pregnant Women* with START Corporation

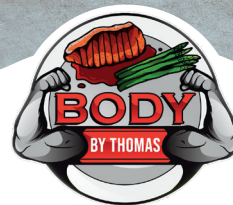
North Branch  
Nov. 30 | 7 p.m.



Magazines are easier than ever to discover on Libby!  
Download the app today!



## HEALTH & WELLNESS SERIES WITH



Main Library  
Nov. 29 | 6 p.m.

Join us for a FREE monthly series with Thomas Nguyen, owner of Body by Thomas restaurant, as he covers different topics relating to health and wellness.

For more info. call 985-876-5861, opt 2 or email [rlecompte@mytpl.org](mailto:rlecompte@mytpl.org)

## Library Service Notice

Hurricane Ida repairs are ongoing at the Main Library and some library branches.

Until further notice, all library locations will not be able to accept and process donations for the Friends of the Library

The Drive Thru at the Main Library will be closed, and curbside pickup will be available by calling 985-876-5861 until repairs are completed.

Repairs may impact programs, so please call your library location to confirm a program is happening. We appreciate your patience with this matter.

### TPL HOLIDAY HOURS

#### NOVEMBER 2023

S	M	T	W	T	F	S
			1	2	3	4
5	6	7	8	9	10	11
12	13	14	15	16	17	18
19	20	21	22	23	24	25
26	27	28	29	30		

- Bayou Branches will be closed to observe Veterans Day
- All library locations will be closed to observe Veterans Day
- All library locations will be closed to observe Thanksgiving

# Children's Programs

\* Registration Required

## Main Library

### Crafternoons

Every Wednesday | 3 p.m.

### Study Buddies for K-5th Graders

Every Thursday | 5 p.m. - 7 p.m.

Students can practice spelling and reading skills with help from other student volunteers. Help sessions will be first come, first served and 15 minutes long.

### Toddler Toy Time! (1-5yrs)

Every Friday | 1 p.m.

### Mini Golf in the Stacks

Nov. 4 | All Day

### Science with BayouSTEM

Nov. 9 | 4:30 p.m.

### LEGO Free Play

Nov. 18 | 11 a.m. & 2 p.m.

### Family BINGO!

Nov. 19 | 3 p.m.

### Movie Time: *Mary Poppins Returns* (2018, PG)

Nov. 20 | 2 p.m.

Movie and popcorn. Parents must attend.

### STEM: Turkey Catapults

Nov. 21 | 1 p.m.

### CREATE: All Ages Art Class

Nov. 25 | 1 p.m.

### Board Games for All Ages

Nov. 26 | All Day

## Chauvin

### Foam Turkey Craft

Nov. 6 | 4 p.m.

### Fall Windsock Craft

Nov. 13 | 4 p.m.

### Pumpkin Catapult Craft

Nov. 20 | 2 p.m.

### Origami Tree Craft

Nov. 27 | 4 p.m.

## North

### Pre-K Story Time & Craft (3yrs+)

Every Tuesday | 10 a.m.

### Peek-A-Boo Story Time (0-18mo)

Every Thursday | 2 p.m.



### Family Movie Time!

Come watch the latest kids movies below at the library.

### *Elemental* (2023, PG)

Nov. 4 | 2 p.m.

### *Spider-Man: Across the Spider-Verse* (2023, PG)

Nov. 18 | 2 p.m.

### Science with BayouSTEM

Nov. 4 | 1:30 p.m.

### Pete the Cat Scarecrow Craft

Nov. 6 | All Day

### Dinosaur Clothespins Craft

Nov. 13 | All Day

### LEGO Creations

Nov. 16 | 6 p.m.

### Pumpkin Patch Craft

Nov. 20 | All Day

### Frog Game Craft

Nov. 27 | All Day

## Dularge



### LEGO Free Play

Every Tuesday | 3:30 p.m.

### Catch-A-Turkey Story Time

Nov. 20 | 11:30 a.m.

### Thanksgiving Story Time & Craft

Nov. 21 | 1 p.m.

### Holiday Countdown Craft

Nov. 30 | All Day

## East Houma

### Zencoloring for All Ages

Every Monday | All Day

### Tiny Tots Story Time (2-4yrs)

Every Wednesday | 10 a.m.

### Craft Grab Bag Friday

Nov. 3 & 17 | All Day

Mystery weekend craft available while supplies last.



### Family Crafternoon at the Library

Nov. 9 | 6 p.m.

Spend quality time on a craft that is hands-on for the whole family!

### LEGO Mania for Kids

Nov. 18 | 2 p.m.

### Science with BayouSTEM

Nov. 25 | 10:30 a.m.

## Dulac

### Handprint Wreath Craft

Nov. 1 | 3:30 p.m.

### Loom Bracelets

Nov. 8 | 3:30 p.m.

### Disguise-A-Turkey Craft

Nov. 15 | 3:30 p.m.

### Science with BayouSTEM

Nov. 20 | 10 a.m.

### Movie Time: *Encanto* (2021, PG)

Nov. 20 | 1 p.m.

### DIY Homemade Butter

Nov. 21 | 1 p.m.

## Gibson

### Thankful Turkey Craft

All Month

While supplies last.

### Thankful Story Time & Craft

Nov. 14 & 16 | 2 p.m.

# Adult Programs

\* Registration Required

## Main Library

Puzzled Folks (of the Jigsaw Variety for Ages 15+)

Nov. 9 | 6 p.m.

The Affordable Connectivity Program (presentado en español)

Nov. 7 | 6 p.m.

More info. on page 1.

Southern Writers Group

Nov. 8 | 7 p.m.

The Affordable Connectivity Program (presented in English)

Nov. 9 | 6 p.m.

More info. on page 1.

Book Society: *The Fellowship of the Ring* by J.R.R. Tolkien

Nov. 28 | 6 p.m.

Health & Wellness Series with Body by Thomas

Nov. 29 | 6 p.m.

More info on page 2.

\*Computer and Creative classes are on pg. 6.

## Dulac

Sewing & Scrapbooking

Every Tuesday | 9 a.m. - 12 p.m.

Patrons bring their own supplies.

Community History Preservation Project

Every Friday | 9 a.m. - 12 p.m.

Scarecrow Wall Hanger

Nov. 2 | 12 p.m.

DIY Bath Bombs

Nov. 9 | 12 p.m.

BINGO for All Ages

Nov. 15 | 12 p.m.

Painted Marble Art

Nov. 16 | 12 p.m.

Watercolor Snowflake Painting

Nov. 30 | 12 p.m.

## North

Adult Diamond Painting Club

Every Tuesday | 1:30 p.m.

Adult Movie: *Barbie* (2023, PG-13)

Nov. 25 | 2 p.m.



National Diabetes Month Education Series

Learn about diabetes and health in this week-long series.

*What is Diabetes?* with START Corporation

Nov. 27 | 7 p.m.

*Nutrition for Diabetes* with Body by Thomas

Nov. 28 | 7 p.m.

*Mental Health for Diabetics* with Empowerment Services

Nov. 29 | 7 p.m.

*Diabetes in Children and Pregnant Women* with START Corporation

Nov. 30 | 7 p.m.

## Dularge

\*Oil Painting with Gail Lecompte

Every Tuesday | 9:30 am

Please call 985-851-1752 for info.

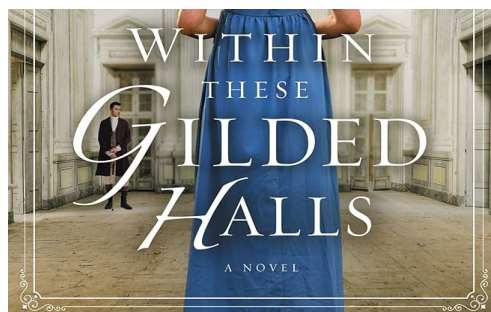
Mexican Train Dominoes

Every Wednesday | 1 p.m.

Sew/So Good Quilters

Every Thursday | 9 a.m.

Patrons bring their own supplies.



Eager Readers Book Discussion: *Within These Gilded Halls* by Abigail Wilson

Nov. 13 | 1:30 p.m.

## East Houma

Zencoloring for All Ages

Every Monday | All Day



The Focus Room at the Library

Every Tuesday | 4 p.m. - 8 p.m.

Use our designated work/study area, free of distractions, for those who need a quiet space.

Computer Help

Every Wednesday | 6 p.m.

Craft Grab Bag Friday

Nov. 3 & 17 | All Day

Mystery weekend craft available while supplies last.



Adult BINGO

Nov. 4 | 3 p.m.

## Gibson

Happy Sewing Class

Every Friday | 12:30 p.m.

Patrons bring their own supplies.

Scrabble Club

Every Wednesday | 12:30 p.m.

\*Adult Book Club

Nov. 13 | 12:30 p.m.

Please call 985-575-2639 to register.

## Chauvin

Adult Sewing Group

Every Tuesday | 9 a.m. - 12 p.m.

Patrons bring their own supplies.

Adult Painting Workshop

Nov. 3 & 8 | 10 a.m.

Patrons bring their own canvas.

Young at Heart Group BINGO

Nov. 29 | 11 a.m.



# Teen Programs

\* Registration Required

## Main Library



### \*Fall Sewing Class for Teens

Nov. 21 | 1 p.m. - 2:30 p.m.  
Registration required. Teens aged 13-17 will learn sewing basics using machines. Registration opens Nov. 14 by emailing [chughes@mytpl.org](mailto:chughes@mytpl.org)

### Mini Golf in the Stacks

Nov. 4 | All Day

### LEGO Free Play

Nov. 18 | 11 a.m. & 2 p.m.

### Family BINGO!

Nov. 19 | 3 p.m.

Play games, win prizes!



### Movie Time: *Mary Poppins Returns* (2018, PG)

Nov. 20 | 2 p.m.

Movie and popcorn. Parents must attend.

### CREATE: All Ages Art Class

Nov. 25 | 1 p.m.

### Board Games for All Ages

Nov. 26 | All Day

## Chauvin

### Foam Turkey Craft

Nov. 6 | 4 p.m.

### Fall Windsock Craft

Nov. 13 | 4 p.m.

### Pumpkin Catapult Craft

Nov. 20 | 2 p.m.

### Origami Tree Craft

Nov. 27 | 4 p.m.

## North

### Word Puzzles & Brain Teasers

Every Day | All Day

### Diamond Painting for Teens

Every Thursday | 1 p.m. - 3 p.m.  
While supplies last. Patrons may bring their own projects.



### Family Movie Time!

Come watch the latest kids movies below at the library.

### *Elemental* (2023, PG)

Nov. 4 | 2 p.m.

### *Spider-Man: Across the Spider-Verse* (2023, PG)

Nov. 18 | 2 p.m.

### LEGO Creations

Nov. 16 | 6 p.m.

## Dularge

### Teen Gratitude Bookmarks

Nov. 2 | 3:30 p.m.

### Diamond Craft Keychain

Nov. 16 | 3:30 p.m.

## Gibson

### \*Teen Book Club & Craft

Nov. 9 | 4 p.m.

Please call 985-575-2639 to register your teen.

## Dulac

### Scarecrow Wall Hanger

Nov. 2 | 12 p.m.

### DIY Bath Bombs

Nov. 9 | 12 p.m.

### BINGO for All Ages

Nov. 15 | 12 p.m.

### Painted Marble Art

Nov. 16 | 12 p.m.

### Watercolor Snowflake Painting

Nov. 30 | 12 p.m.

## East Houma

### Zencoloring for All Ages

Every Monday | All Day

### The Focus Room at the Library

Every Tuesday | 4 p.m. - 8 p.m.  
Use our designated work/study area, free of distractions, for those who need a quiet space.



### Craft Grab Bag Friday

Nov. 3 & 17 | All Day

Mystery weekend craft available while supplies last.



### Family Crafternoon at the Library

Nov. 9 | 6 p.m.

Spend quality time on a craft that is hands-on for the whole family!

## Need a hand with homework?

We can help with Homework LA and your library card by going to [mytpl.org](http://mytpl.org)

Get access to online tutoring on demand 7 days a week, 2 p.m. to midnight.

Tutors help with more than 60 subjects for grades K-12, college, and adult courses. Help is available in English and Spanish.

PLUS get access to test prep tools, career coach help, citizenship test prep and more.



# Library Directory

**Main Library** 985.876.5861  
151 Library Drive  
Mon-Thurs: 8 a.m. - 9 p.m.  
Fri & Sat: 8 a.m. - 5 p.m.  
Sun: 2 p.m. - 6 p.m.

**East Houma** 985.876.7072  
778 Grand Caillou Road  
Mon-Thurs: 8:30 a.m. - 9 p.m.  
Fri & Sat: 8:30 a.m. - 5 p.m.

**North** 985.868.3050  
4130 West Park Avenue  
Mon-Thurs: 8:30 a.m. - 9 p.m.  
Fri & Sat: 8:30 a.m. - 5 p.m.

**Chauvin** 985.594.9771  
5500 Highway 56  
Mon-Thurs: 8:30 a.m. - 5 p.m.  
Fri: 8:30 a.m. - 2:30 p.m.

**Dulac** 985.563.2014  
200 Badou Drive  
Mon-Thurs: 8:30 a.m. - 5 p.m.  
Fri: 8:30 a.m. - 2:30 p.m.

**Dularge** 985.851.1752  
837 Bayou Dularge Road  
Mon-Thurs: 8:30 a.m. - 5 p.m.  
Fri: 8:30 a.m. - 2:30 p.m.

**Gibson** 985.575.2639  
6400 Bayou Black Drive  
Mon-Thurs: 8:30 a.m. - 5 p.m.  
Fri: 8:30 a.m. - 2:30 p.m.

This newsletter is produced by the Terrebonne Parish Library System and is available in print and digital at [mytpl.org](http://mytpl.org)

Check out our Linktree through the QR code below for more on what's happening now!



## Computer Classes @ Main Library

**Intro to Google Sheets**  
Nov. 6 | 6 p.m.

**Intro to the Internet**  
Nov. 15 | 2 p.m.



## Choice Book Sale

Main Library  
Dec. 15 & 16: 9 a.m. - 5 p.m.  
Dec. 17: 2 p.m. - 5 p.m.

The Friends of the Library inventory of best-selling books by popular authors will be available for purchase at \$10 a bag.

Proceeds benefit the programming of the Terrebonne Parish Library System.

## Noon Year's Eve CHILDREN'S PARTY

Main Library  
Dec. 29 | 11:30 a.m.

Count down to the (almost) new year with games, crafts, music, and a special balloon drop. Kids and family event.

## Looking for a meaningful gift?

In lieu of flowers, consider a book donation with the Terrebonne Parish Library.

Your donation will provide a brand-new book honoring your tribute that will journey through the hands of patrons for years to come!

Find out more at [mytpl.org/memorial](http://mytpl.org/memorial)

\* Registration Required



**Starting Stitches**  
Every Thursday | 10 a.m.

**Open Lab for Creatives**  
Every Thursday | 5 p.m. - 8 p.m.

**Diamond Painting Club**  
Every Friday | 10 a.m.

**\*Intro to Cricut**  
Nov. 1 & 15 | 6 p.m.

**\*Beginning Sewing**  
Nov. 8 | 6 p.m.

**\*Mending & Repair Class**  
Nov. 29 | 6 p.m.  
It is recommended to take Beginning Sewing before this class or have prior experience with a sewing machine.

Register for creative classes on the library calendar at [mytpl.org](http://mytpl.org) or by calling (985) 876-5861 opt. 2.

## STORY TIMES @ MAIN LIBRARY

**Toddler Story Time (19mo-3yrs)**  
Every Monday & Thursday | 10 a.m.

**\*Sensory Story Time (3-7yrs)**  
Every Monday | 6 p.m.

**Babygarten Story Time (0-18mo)**  
Every Tuesday | 10 a.m.

**Family Story Time & Craft (0-7yrs.)**  
Every Tuesday | 5:30 p.m.

**Family Story Time & Craft (all ages)**  
Nov. 1, 8 & 29 | 10 a.m.

**Play Café Toddler Story Time**  
Nov. 5 | 2 p.m.

**\*Sensory Story Time (3-7yrs)**  
Nov. 12 | 3 p.m.

